

MAY 2020

WORLD CHANNEL PROGRAMMING HIGHLIGHTS ON TV & ONLINE



ASIAN PACIFIC MONTH HIGHLIGHTS AMERICAN HERITAGE

EXPLORE PROGRAMMING



DRAWN TOGETHER

- TV: May 3
- Streaming begins: TBD

Drawn Together traces the fascinating journey of three comic creators

who challenge race, religious and gender stereotypes through cartoons, comics and cosplay—the practice of dressing up as a character, especially one from the Japanese genre. See how these animators channel their anger and frustration about intolerance and discrimination by spreading a more positive message through their artistry.



REEL SOUTH: SEADRIFT

- TV: May 10
- Streaming begins: May 10

In 1979, a fatal shooting ignites a maelstrom of hostilities against

Vietnamese refugee fishermen along the Gulf Coast. Set during the early days of Vietnamese refugee arrival in the U.S., Seadrift examines this turbulent yet little-seen chapter of American history and explores its consequences that continue to reverberate today.



PACIFIC HEARTBEAT: POWER MERI

- TV: May 11
- Streaming begins: May 11

The story of Papua New Guinea's first national women's rugby league

team, the PNG Orchids, on their journey to the 2017 World Cup in Australia. These trailblazers must beat not only the sporting competition, but also intense sexism, a lack of funding, and national prejudice to reach their biggest stage yet.



ASIAN AMERICANS

- TV: Fridays May 15-22
- Streaming begins: May 11

Led by a team of Asian American filmmakers, including Academy

Award®-nominated series producer Renee Tajima-Peña, ASIAN AMERICANS showcases the significant role of Asian Americans in shaping American history and identity, from the first wave of Asian immigrants in the 1850s and identity politics during the social and cultural turmoil of the twentieth century to modern refugee crises in a globally connected world.

STORIES FROM THE STAGE PREMIERES

EXPLORE STORIES FROM THE STAGE



FIRST RESPONDERS

- TV: Monday, May 18
- Streaming begins: May 18

Being first at the scene means facing emotional & ethical dilemmas. It can

also offer profound personal rewards. After 9/11, Jude finds seeds of hope to fuel her work once again; rescue worker Dan works hard to be on time for a date; and as UN Peacekeeper, Praveen oversees Mozambique's first democratic elections.



AT THE SCENE

- TV: Monday, May 25
- Streaming begins: May 25

Some life-changing moments can happen only at the scene. After what he

believes to be a heart attack, Hunter Gardner finds himself having existential thoughts at the ER; Courtney Pong shuts down a group of misogynistic stand-up comics and discovers the power of her own voice; and stuck in the middle of rural Vermont, Cynthia Rojas must face her fear of taking an Uber.

Join us for FacebookLive 'Watch & Chat' events every Monday!

FACEBOOKLIVE 'WATCH & CHAT'

AMERICA REFRAMED

HERITAGE MONTH FILMS DOUBLE FEATURE ON MAY 26TH

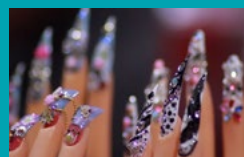


AMERICA REFRAMED: 9-MAN

- TV: Tuesday, May 26
- Streaming begins: May 1

A competitive Chinese-American sport, 9-Man was a way for Chinese workers to escape the day-to-day but today, it provides a lasting connection to culture and community pride. Follow several teams over the course of one season as they prepare for battle and fight for the championship in Boston. What does the future hold for this street ball battle?

LEARN MORE



AMERICA REFRAMED: NAILED IT

A co-production of the Center for Asian American Media.

- TV: Tuesday, May 26
- Streaming begins: May 26

In every city, state and strip mall across the U.S., people get their nails done in salons likely owned by Vietnamese entrepreneurs who've come to dominate an \$8 billion dollar nail economy. It began with 20 refugee women and a chance encounter with famed Alfred Hitchcock actress and humanitarian Tippi Hedren.

LEARN MORE

AMERICA REFRAMED

SEASON 8 ALL NEW FILMS!



WHERE THE PAVEMENT ENDS

- TV: May 5
- Streaming begins: May 5

Where The Pavement Ends transports viewers to Missouri towns of Kinloch and Ferguson, examining the shared histories and deep racial divides affecting both. A haunting and mesmerizing look at the deep and lasting wounds of segregation and racial injustice, the film shines a light on the pride and tragedy of Kinloch while also reminding viewers of the countless American neighborhoods whose residents live worlds apart.

LEARN MORE



JADDOLAND

- TV: May 12
- Streaming begins: May 12

An intimate portrait of the work and process of the director's visual artist mother Lahib Jaddo. Jaddoland offers viewers a fresh look at the immigrant story in America. Through an exploration of her mother's art and connections to her life in Texas, Shihab also drafts a unique picture of how art can help both the creator and the audience make sense of familial and cultural connections, loss, perseverance and life.

A co-production of WORLD Channel and the Center for Asian American Media.

LEARN MORE



TUTWILER

- TV: May 19
- Streaming begins: May 19

Tutwiler takes audiences into Alabama's only women's penitentiary, Julia Tutwiler Prison and explores the Alabama Prison Birth Project, helping expectant and new mothers learn childbirth and parenting skills while dealing with the pain of being separated from their children.

LEARN MORE

FUNDERS:



CONTENT PARTNERS:

